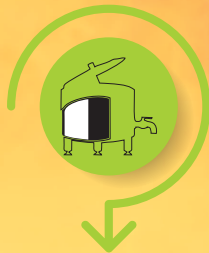


# VOLTAZO REFRIGERATION

*One Stop Cooling Solution*



**Cold Room**



**Dairy Equipment**



**Ice Cream Plant**



**Refrigerated Vehicle**

## COLD ROOM

We, Voltazo Refrigeration have 11 years' experience in Industrial Refrigeration & Dairy Field. We are a leading Supplier of Energy efficient cold room /storage that is easy to operate and better in performance. This tailor-made product range is built with premium quality range material in standard size and customized specifications to fulfil our customer needs. These cold rooms are well insulated, highly efficient and precisely designed to cater to a wide temperature from +15 °C to -40 °C.



### TOTAL COLD CHAIN SOLUTION



# PUF PANELS

## TECHNICAL SPECIFICATION OF PUF PANELS

<b>Thickness</b>	: 40, 50, 60, 100, 125 & 150mm
<b>Surface Material</b>	: GI pre-painted sheet, S.S. sheet (Grade 304/316 & surface finish 2B & matte), GI Plain Sheet. (Inside & outside different metal can be placed as per your requirement.)
<b>Floor</b>	: <b>PUF slab</b> with both sides tar felt coated for Kota stone or concrete floor. <b>Kota panel</b> with both side metal surface panel which each side fits with cam lock and prevent temperature loss for Kota stone or concrete floor. <b>Aluminum Chequered</b> plate with marine ply.
<b>Door</b>	: Flush Type Swing Door with PVC Profile, Imported Hardware, Push Type Gasket & replaceable heater for easy door operation & long life <b>Opening Size: 24"x72", 30"x72", 34"x78", 46"x84" (Door Opening WxH)</b> Overlap Type Swing door with frame with metal covering by using heavy duty hardware for better strength <b>Opening Size: 46"x84", 49"x84", 54"x84", 60"x90" (Door Opening WxH)</b>
<b>Room Size</b>	: Length & width minimum of 1.78 Meter and bigger size 0.145 Meter in multiples as per requirement. Height - as per customer requirements. <b>(Panel Standard width 1180, 885, 737, 590, 422, 295)</b>
<b>Average PUF Desnity</b>	: 40 ± 2 Kg/m <sup>3</sup>
<b>PUF Blowing Agent</b>	: 141B (CFC free)
<b>Insulation Material</b>	: Polyurethane foam
<b>Temperature range</b>	: +80°C to -40°C
<b>Penal Type</b>	: Discontinuous type with camlock
<b>M.O.C. of Camlocks</b>	: Cam locks body material HIPS and male latch is made of nylon Glass field with GI sheet reinforcement. Cam-lock panel joints easy assembly and leakage resistant, panel-to-panel joints.
<b>Type of Panel joints</b>	: Tongue & Groove Joint with Cam lock
<b>Corner Panel Available</b>	: 12" x 12" x 126" (maximum Length)
<b>Length of Wall &amp; ceiling Panel</b>	: 2032 mm to 6000 mm

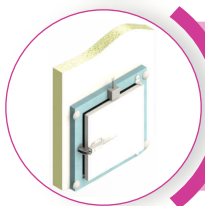
## ACCESSORIES



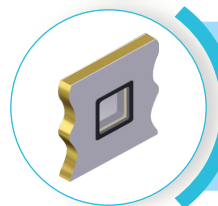
**Sliding Door:** Opening Size  
Width: 1000/1200/1500/1800 mm  
Height: 2100 to 3000 mm **Thickness:** 80 mm  
**Panel Surface Material:** Both side GIPP or S.S as per requirement



**Pressure Ventilator:-**  
Tri-action pressure ventilator with/without heater to balance pressure and vacuum inside cold room.



**Hatch Window:-** Opening Size (WxH):  
20"x20", 24"x24", 30"x30"  
Different size hatch window with heavy frame for easy material movement in high turnover ice cream and dairy industries.



**View Port:-**  
12"x12" View port with three layer argon filled, toughen glass which can be visible up to 2°C inside the cold room.



**Strip Curtain:-**  
Semi transparent PVC strip curtain for negative temperature application to prevent heat loss and ultimately the power.



**High-Low Temperature Alarm**



**Inside Safety Alarm**



**Door with Kick Plate**



**Wall Guard**



**Door Accessories**



**LED Bulk Head**

## REFRIGERATION SYSTEM

Voltazo Refrigeration offers a complete range of Condensing unit & Evaporator units. This unit is designed to deliver superior cooling for food preservation and are equipped to deliver temperature for various application. The selection of the evaporating unit and condensing unit assures the delivery of capacity. Voltazo refrigeration provides the control panel with total safety controls for easy, speedy, safe, long-lasting & trouble-free operation.

### CONDENSING UNIT

Voltazo Refrigeration serves a wide range of condensing units with Air-cooled / Water Cooled condensers for better performance in high ambient with low power consumption.



### FEATURES

- Available for all range of Application (High, Medium & Low Temperature)
- Proven energy-saving results in quick payback.
- Condensing Coli with Inner grooved copper tubes for superior heat transfer.
- Safety and control devices for better system protection.
- Easy Handling & installation.
- Powder-coated body makes this unit UV and corrosion-resistance.
- Filter drier for moisture and dirt protection.

### RACK SYSTEM - An Advanced Refrigeration Technology :



- It has advanced power saving system compared to normal refrigeration system
- Rack system will work as per product load variation
- A wide range of compressors is available, including digital scrolls & semi hermetic compressor.
- High efficiency, robustly designed for high reliability.
- Customized to suit your refrigeration needs
- Comprehensive range from 20-300 HP for LOW, Medium, and high Temperature application.
- Electronic controller units are also available on PS systems. Choose from a variety of units depending on individual requirements such as monitoring of system features, diagnostics, interfacing with existing building controls.



## REFRIGERATION SYSTEM

### EVAPORATOR UNIT

Evaporator of Cold rooms are compact & sleek. The evaporator housed within the cold storage and occupies minimum space. This allows you to utilize the maximum volume of cold storage.



### FEATURES

- Wide range of Application (Chiller, Freezer, Blast freezer)
- High-efficiency coils made from 1/2" Copper pipe & special profile aluminum fins.
- Heat exchange supplied under clean & tested under 30 bar pressure.
- Powder coated high corrosion strength & impact resistance casing.
- Heater provided with stainless steel elements covered by aluminum fins.
- Electric parts connected to the earth terminal & carried out in junction box.
- High-quality axial fan motors with high safety standards with anti-vibration system.
- Compact, adjustable & easily openable side panels for easy installation & service.

### CONTROL PANEL

Voltazo refrigeration comes ready to use power panels that make electrical connections simple, fast & long lasting.



### FEATURES

- Standard Make Temperature Controller is suitable for different applications.
- Phase preventing
- HP-LP
- Over / under current protection
- Auto Defrost
- Delay timer
- High – Low-Temperature Alarm (Optional)
- All type of trip Alarm

## BULK MILK CHILLER



250/500/1000



1500/2000



3000/5000



Dump Tank








We at 'Voltazo', provide various cutting edge solutions for retaining the natural quality of the milk. The range of 'TVoltazo Equipments' Bulk Milk Coolers gives top cooling performance every time. These are manufactured by using evaporator dimpled plate. The BMC is available in different shapes and sizes depending on the amount of milk to be cooled and the system of cooling. We offer Bulk Milk Chiller is used to cool the milk at 4 °C to maintain the freshness of milk with capacity from 250 Ltr to 5000 Ltr. An efficient evaporator (Dimple Jacket) ensures quick cooling and space saving installation. The tank is insulated to maintain the temperature and is provided with an agitator for Uniform distribution and cooling of milk.

**Capacity: 250/500/1000/1500/2000/3000/5000 Ltr.**

### TECHNICAL SPECIFICATION

DESCRIPTION	BMC-250	BMC-500	BMC-1000	BMC-1500	BMC-2000	BMC-3000	BMC-5000
<b>Tank Capacity</b>	250 Ltr.	500 Ltr.	1000 Ltr.	1500 Ltr.	2000 Ltr.	3000 Ltr.	5000 Ltr.
<b>Body Type</b>	Horizontal Rectangular	Horizontal Rectangular	Horizontal Rectangular	Semi Cylindrical	Semi Cylindrical	Cylindrical Closed	Cylindrical Closed
<b>No. of Door</b>	1	1	2	1	1	1	1
<b>No of Agitator</b>	1	1	1	2	2	1	1
<b>Power Cons./Hr (Unit)</b>	1.2	2.7	4.5	5.9	6	7.8	11.8
<b>Power Supply</b>	1 Ph	1 Ph	1/3 Ph	3 Ph	3 Ph	3 Ph	3 Ph
<b>Pull Down Time</b>	4.5 Hrs	4.5 Hrs	5 Hrs	5 Hrs	6 Hrs	6 Hrs	6 Hrs

### FEATURES

-  **HIGH DURABILITY**
-  **EFFECTIVE INSULATION**
-  **OPERATIONALLY EFFICIENT AGITATION**
-  **EASY TO INSTALL**
-  **HIGH LOAD CAPACITY**
-  **EFFICIENT COOLING THERMAL PLATES**
-  **GEAR MOTOR**

## BATCH PASTEURIZER



Pasteurization is a process of heating treatment to kill disease-carrying germs in milk and ice cream mix without affecting their nutritional and natural qualities. After heating, the milk or ice cream mix remains at a high temperature for the time required to kill all germs and then quickly chilled to store at 4°C.

**CAPACITY: 100/200/300/500/750/1000/1500/2000 Ltr per Batch**

### FEATURES

- Reduces total bacterial count
- Improved distribution of flavouring and colour
- Melting and uniform suspension of fats in the mixture
- Hydrates proteins and stabilizers, if dried ingredients are used
- Large volume of milk can be processed continuously
- Automatic precision control assures effective pasteurization
- The equipment requires a relatively small area of floor and plant space
- The closed unit keeps the processing losses to a minimum

## AGEING VAT



Ageing Vat is used to cool down ice cream mix and to maintain temperature of around 4°C. Slow agitation allows the complete ageing of the ice cream mix.

**Capacity: 100/200/300/500/750/1000/1500/2000 Ltr per Batch**

### FEATURES

- Compact design
- Easy operation & user-friendly
- Automatic precision control assures quality ageing of mix
- The equipment requires a relatively small amount of floor and plant space
- The closed unit keeps the processing losses to a minimum

## ICE CANDY PRODUCTION MACHINE with CHOCO COATING

We manufacture wide range of Ice Candy Production Machine using high quality material & advanced technology which is to be used for the production of Ice Candies.

**CAPACITY : 6 mould / 9 mould / 15 mould / 20 mould**



## MILK STORAGE TANK



The milk storage tank is ideal for cooling and holding milk at a cold temperature until it's further processed. The machine is made of stainless steel and used to store the raw milk in good condition.

**CAPACITY: 500/1000/1500/2000/3000/5000 Ltrs.**

## ICE CREAM MIX PLANT



SKID MOUNTED/MIX PREPARATION PLANT FOR ICE CREAM PRODUCTION

**CAPACITY: 100/200/300/500/1000 Ltrs. per Batch**

## RIPPLE MACHINE



### FEATURES

- India's 1st gear pump type ripple machine
- Frame And Covering Panel Made From S.S.304 Quality
- Special Design Gear Pump For Viscous Ripple
- Suitable For Viscous Syrup
- Complete With Internal Piping, By Pass Arrangement And Drain Plug
- Very Less Noise And Vibration
- No Maintenance



## CONTINUOUS FREEZER



### FEATURES

- Covering panel made from S. S. quality
- Two stage homogenization
- Low RPM plunger pump
- Pressure adjustment by hand wheel
- Sterlite coated seat ball valves for suction and discharge parts
- S. S. diaphragm type sanitary design pressure gauge.
- High strength steel eccentric shaft and connecting rod assembly
- Splash lubricating system

MODEL	CF100	CF200	CF400
Ice-cream Capacity	100 ltr /hr	200 ltr/hr	400 ltr/hr
Mix Capacity	50 ltr /hr	100 ltr /hr	200 ltr /hr
Dasher Motor	1 HP	2 HP	5.5 HP
Compressor	2 HP	3.5 HP	2 X 3.5 HP
Mix Pump Motor	0.5 HP	1.0 HP	1.5 HP
Compressor Type	Hermetic Recip.	Hermetic Recip.	Hermetic Recip.
Refrigerant	R-404 A	R-404 A	R-404 A
Water Flow Rate At 30°C	1500 L/Hr.	2000 L/Hr.	4500 L/Hr.

## HOMOGENIZER MIXER



### FEATURES

- Covering panel made from S. S. quality
- Two stage homogenization
- Low RPM plunger pump
- Pressure adjustment by hand wheel
- Sterlite coated seat ball valves for suction and discharge parts
- S. S. diaphragm type sanitary design pressure gauge.
- High strength steel eccentric shaft and connecting rod assembly
- Splash lubricating system

MODEL	HM-150	HM-300	HM-500	HM-1000
Capacity	150 ltr /hr	300 ltr/hr	500 ltr/hr	1000 ltr/hr
No. of Piston	1	2	3	3
Motor HP	3 HP	5 HP	7.5HP	10 HP
Max Working Pressure	300PSI	300PSI	400PSI	400PSI





**VOLTAZO**  
**REFRIGERATION**

*One Step Cooling Solution*

28-30, 1st Floor, Alfa Shopping Centre,  
Nr. Chandlodia Over Bridge, Chandlodia, Ahmedabad- 382481.

Email : [info@voltazo.in](mailto:info@voltazo.in) Website : [www.voltazo.in](http://www.voltazo.in)

Mobile : +91 9727762431, 9974044440